

Custom-made cell
mainly intended to limit
the load on cranes



TLCX Traction load cell

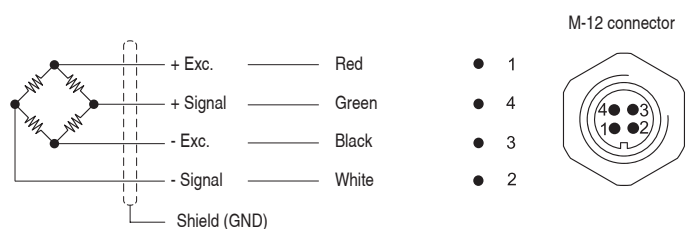
TLCX traction cells have been developed primarily to limit the load on cranes, commonly applied on lattice cranes. They are usually installed on the straps of the cranes to limit their load.

It is a cell that is custom manufactured for each installation, made of a robust design covering nominal loads from 1 to 60 tons. This cell can be manufactured in alloy steel and depending on its nominal capacity, stainless steel.

Specifications

Parameter	Units	Specifications	
Model	-	TLCX	
Nominal Load (N.L.)	t	1 ... 60	
Nominal Sensibility (N.S.)	mV/V	0.8 ... 1.4	
Accuracy	-	0.3%	
Zero balance	%N.S.	2	
Maximum excitation voltage	V	12	
Temperature range	Compensated	-10 ... +40 (+14 ... +104)	
	Operating	-20 ... +60 (-4 ... +140)	
	Storage	-20 ... +70 (-4 ... +158)	
Min. Insulation resistance (V.Test s 100V)	GΩ	>5	
Input resistance	Ω	350 ± 3	
Output resistance	Ω	350 ± 1	
Load limit	Safe	150	
	Without characteristics loss	200	
	Breaking	>300	
Connection	-	Connector / Cable	
Sensor	Material	Alloy steel	Stainless Steel
	Surface treatment	Chemical nikel	-
Protection	-	IP66	
Working on	-	Traction	

Wiring diagram



<p>Nominal Load (t):</p> <hr/> <p>Material: <input type="checkbox"/> Alloyed steel + nickel plated</p> <p><input type="checkbox"/> Stainless Steel</p> <hr/> <p>Signal type: <input type="checkbox"/> mV/V</p> <p><input type="checkbox"/> 4-20 mA</p> <p><input type="checkbox"/> 0-10 V</p> <p><input type="checkbox"/> Other</p>	<p>Connection: <input type="checkbox"/> Wired</p> <p>Cable type: <input type="checkbox"/> 4 x 0.22 mm² Ø5.3 (Standard)</p> <p><input type="checkbox"/> Other</p> <p>Standard length: <input type="checkbox"/> 5m (estándar)</p> <p><input type="checkbox"/> Other</p> <p>Cable end: <input type="checkbox"/> With threads</p> <p><input type="checkbox"/> With connector</p> <p><input type="checkbox"/> With connector <input type="checkbox"/> M12</p> <p><input type="checkbox"/> Other</p> <hr/> <p>Redundant output: <input type="checkbox"/> No</p> <p><input type="checkbox"/> Sí <input type="checkbox"/> 2 outputs for 2 independent signals</p> <p><input type="checkbox"/> 1 output for 2 independent signals</p>
---	---

Dimensions in mm

A

B

C

D

ØE

Remarks:

.....

.....

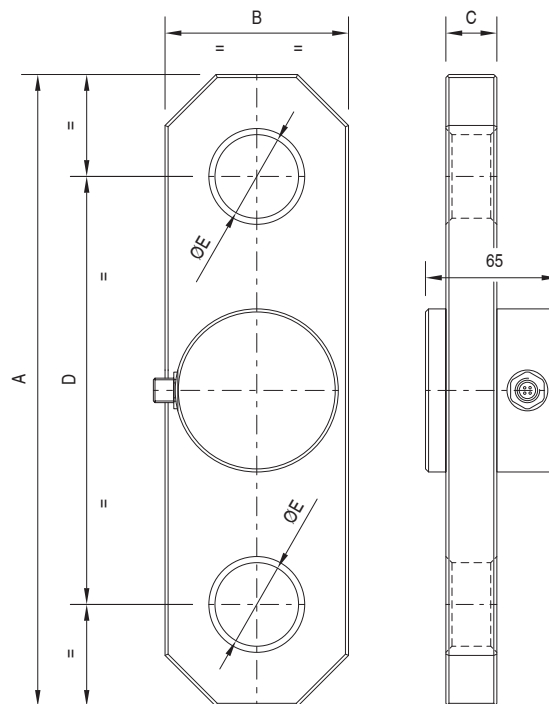
.....

.....

.....

.....

.....



For more information

www.dinacell.com

Dinacell Electrónica S.L.
 Pol. Ind. Santa Ana C/ El Torno N°8
 CP 28522 Rivas Vaciamadrid, Madrid, ESPAÑA
 Tel. (+34) 913 001 435
 Fax. (+34) 913 001 645

Document Ref: D1182-01
Publication Date: 21/02/2022

Certified company



PYMEINNOVADORA



Dinacell Electrónica S.L. reserves the right to add, modify and/or delete content of the document without prior notice. The content indicated here should be used as general product information. It should not be interpreted as a guarantee of quality or durability.