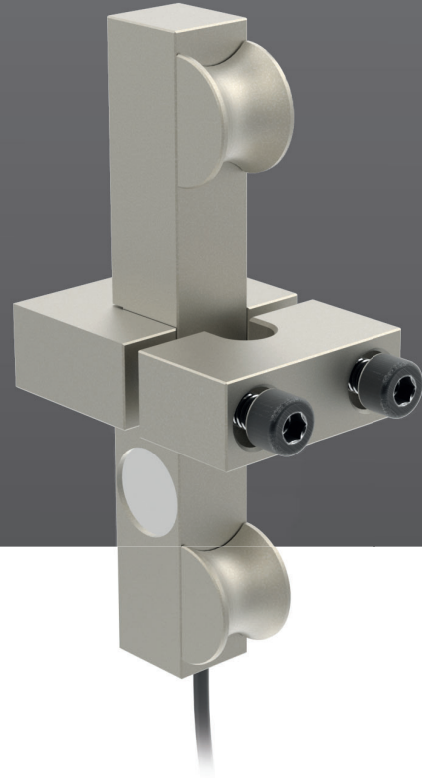


## Rope Load Cell Weighing System



### LM Load Cell for Ropes

The LM load cell family is used for measuring the wire rope tension and weight on cranes and elevators.

Installed on the ropes fix point. The load cell offers an easy solution for measuring tension and weight with no mechanical modifications and without travelling loss.

Available in several sizes and nominal loads, different rope clamps can be selected for any rope diameter and nominal load.

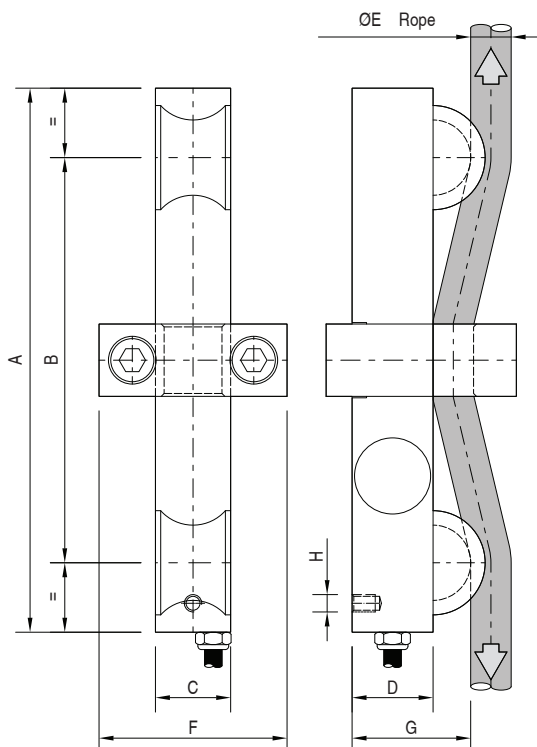
The standard nominal loads range from 1 to 40t and the rope diameter from 5 to 44 mm. The load cells can be customized to meet any requirements.

Manufactured in alloy steel with corrosion protection or stainless steel, the LM load cell will satisfy any specific need.

## Specifications

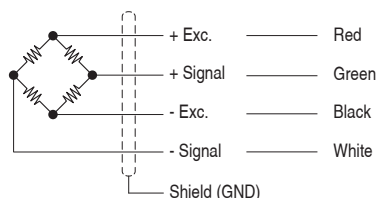
Parameter	Units	Specifications	
		LMP	LMG
Model	-	LMP	LMG
Nominal Load (N.L.)	t	1 / 2 / 3.5 / 7	8 / 10 / 15 / 20 / 25 / 30 / 40
Nominal Sensibility (N.S.)	mV/V	1 ... 2	
Accuracy	-	1%	
Zero balance	%N.S.	± 10	
Maximum excitation voltage	V	12	
Maximum linearity error	%N.S.	0.108	
Temperature range	Compensated	-10 ... +40 (+14 ... +104)	
	Operating	-20 ... +60 (-4 ... +140)	
	Storage	-20 ... +70 (-4 ... +158)	
Min. Insulation resistance (V.Test = 100V)	GΩ	4	
Input resistance	Ω	350 ... 400	
Output resistance	Ω	350 ± 1.5	
Workload limit without characteristic loss	%N.L.	150	
Cable	Type	4 x 0.22 mm <sup>2</sup> Ø6	
	Standard length	5	
	Material	Polyurethane (PU)	
Sensor	Material	Alloy steel / Stainless steel	
	Surface treatment	Chemical nickel (Only alloy steel)	
Protection class	-	IP65	

## Dimensional Drawings (mm)



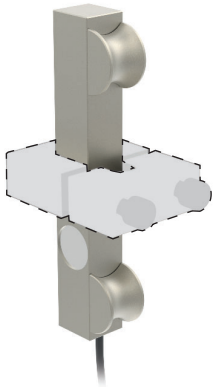
N.L. (t)	LMP		LMG	
	1 / 2 / 3.5 / 7	8 / 10 / 15 / 20	25 / 30 / 40	
A	188	305	400	
B	140	260	350	
C	26	36	42	
D	28	32	36	
ØE	7 ... 26	12 ... 44	12 ... 44	
F	65	88	88	
G	41	45	49.5	
H	M-6	M-8	M-8	

## Wiring diagram



## Product Reference

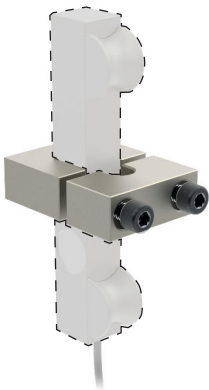
### Sensor



Ref. Alloy steel	Ref. Stainless Steel	Nominal Load (N.L.)	Model
001499	024021	1	LMP
005088	011458	2	
001071	007829	3.5	
001039	002645	7	
002993	022339	8	LMG
002309	022340	10	
001038	002644	15	
001493	022341	20	
006147	022342	25	
005066	022343	30	
007205	022344	40	

These cells can be custom manufactured. Contact our sales team to customize these cells for other material types, output type (4-20mA, 0-10V...), cable length, etc.

### Clamps



Ø Flange	LMP	LMG	
	1 / 2 / 3.5 / 7 (t)	8 / 10 / 15 / 20 (t)	25 / 30 / 40 (t)
5-6.5	003251	-	-
7-8	003252	-	-
9-10	003253	-	-
11-12	003254	002393	-
13-14	003255	003233	-
15-16	003256	003234	-
17-18	003257	003235	-
19-20	003258	003236	007212
21-22	003259	003237	-
23-24	003260	003238	-
25-26	003261	003239	026436
27-28	003262	003240	-
29-30	003263	003241	007208
31-32	005402	003242	007207
33-34	027247	003243	-
35-36	003264	003244	013315
37-38	-	003245	028707
39-40	-	003246	007206
41-42	004029	003247	007209
43-44	-	003248	-
45-46	-	003249	007210
47-48	-	003250	007572

These cells can be custom manufactured. Contact our sales team.

For more information

[www.dinacell.com](http://www.dinacell.com)

Dinacell Electrónica S.L.  
 Pol. Ind. Santa Ana C/ El Torno Nº8  
 CP 28522 Rivas Vaciamadrid, Madrid, ESPAÑA  
 Tel. (+34) 913 001 435

**Document Ref: D1143-04**  
**Publication Date: 10/01/2024**

Certified company



PYMEINNOVADORA

