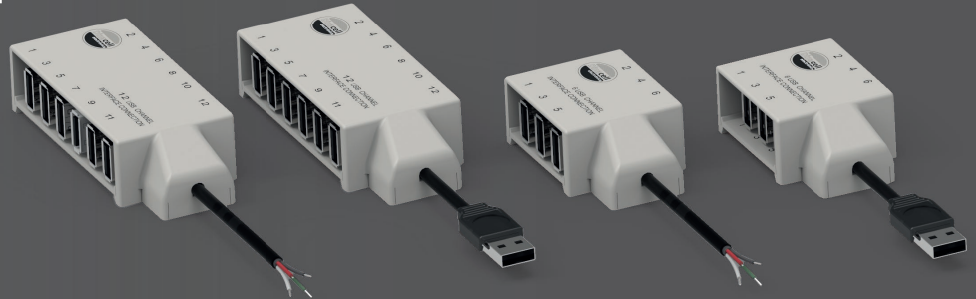


## INTERFACE

6 or 12 USB junction box

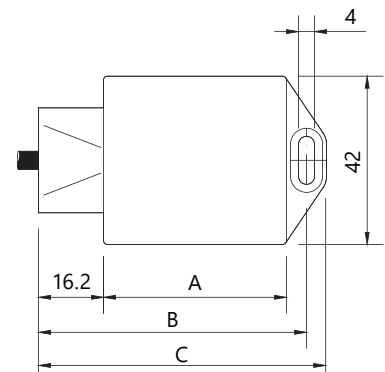
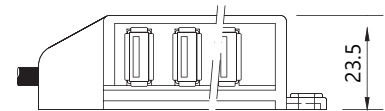
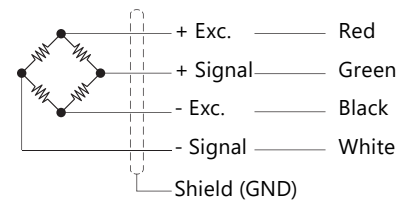


More information

## INTERFACE Junction boxes

The INTERFACE hubs enable the installation of load limiters that have only a single input. Two models are available: one can connect up to six sensors and the other up to twelve.

Both models come in two options: with USB terminations or wired connections.



USB	Dimensions in mm		
	A	B	C
6	48	69	74
12	84	105	110

Parameter	Units	Specifications			
Model	-	INTERFACE			
Temperature range	°C (°F)	-20 ... +60 (-4 ... +140)			
Casing material	-	Fireproof V0			
Protection class	-	IP50			
Cable type	-	4 x 0.22mm <sup>2</sup> Ø4			
Standard length	m	5 + Ferrita			
USB Input	-	6		12	
Cable Output	-	USB	Wiring connection	USB	Wiring connection
Ref.	-	007555	007274	007554	007275

\*Halogen-free on request

For more information

[www.dinacell.com](http://www.dinacell.com)

Dinacell Electrónica S.L.  
 Pol. Ind. Santa Ana C/ de la Fundación 8  
 CP 28522 Rivas Vaciamadrid, Madrid, ESPAÑA  
 Tel. (+34) 913 001 435

Certified company



Management System  
 ISO 9001:2015  
 ISO 14001:2015



www.tuv.com  
 ID 9105038889



PYME INNOVADORA



Document Ref: D1036-05

Publication Date:

16/09/2025

VM05.01

Dinacell Electrónica S.L. reserves the right to add, modify and/or delete content of the document without prior notice. The content indicated here should be used as general product information. It should not be interpreted as a guarantee of quality or durability.