

Load cell for weighing loads on large hooks



CTDC Traction weighing cell

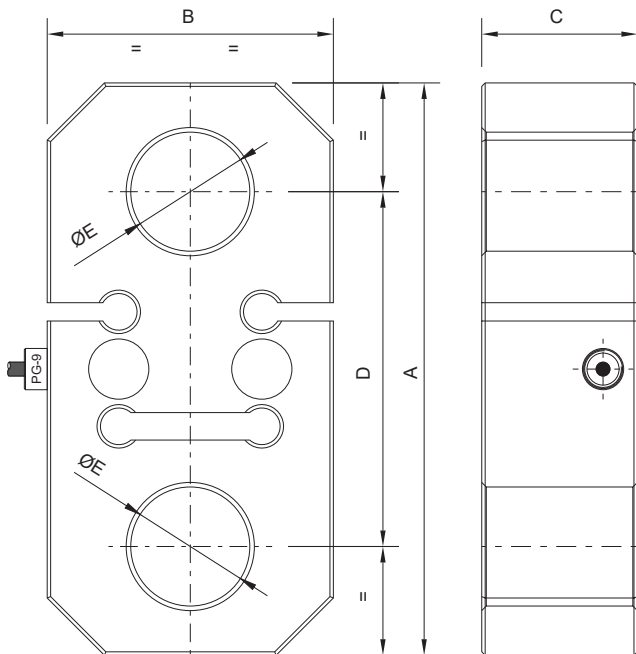
The CTDC load cell is used on cranes and industrial processes, for load limitation on large hooks. Its different nominal loads range from 10 to 50 tonnes.

This cell is made of double-shear sensor elements. Its specific characteristics make this cell an optimal solution for industrial environments with complete protection against contact or dust penetration as well as water penetration when being submerged, IP67.

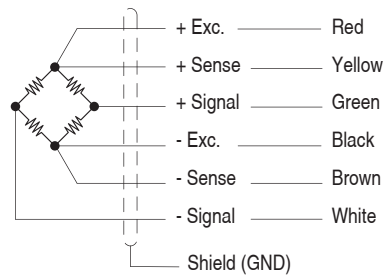
Specifications

Parameter	Units	Specifications
Model	-	CTDC
Nominal Load (N.L.)	t	10 / 12 / 15 / 20 / 25 / 35 / 50
Nominal Sensibility (N.S.)	mV/V	2.0 ± 0.1%
Zero balance	%N.S.	1.5
Maximum excitation voltage	V	12
Hysteresis error	%N.S.	0.027
Crepp, over 30 minutes	%N.S.	0.02
Maximum linearity error	%N.S.	0.022
Temperature range	Compensated	-10 ... +40 (+14 ... +104)
	Operating	-20 ... +60 (-4 ... +140)
	Storage	-20 ... +70 (-4 ... +158)
Temperature effect on sensibility	%N.S.	± 0.023
Temperature effect on zero	%N.S.	± 0.019
Min. Insulation resistance (V.Test s 100V)	GΩ	4
Input resistance	Ω	760 ± 20
Output resistance	Ω	700 ± 2
Load limit	Safe	150
	Ultimate	180
	Broken	300
Cable	Type	-
	Standard length	m
	Material	-
Sensor	Material	-
	Surface treatment	-
	Protection class	-
Working on	-	

Dimensional drawings (mm) and wiring diagram



N.L. (t)	10 / 12	15 / 20	25	35 / 50
A	220	250	290	330
B	110	125	125	150
C	48	68	78	90
D	130	155	175	195
ØE	45	52	58	72



Product Reference



Ref.	Nominal Load (t)	Model
007283	10	CTDC
002066	12	
003964	15	
002966	20	
001918	25	
001909	35	
008421	50	

For customizations turn to the sales department.

For more information

www.dinacell.com

Dinacell Electrónica S.L.
 Pol. Ind. Santa Ana C/ El Torno N°8
 CP 28522 Rivas Vaciamadrid, Madrid, ESPAÑA
 Tel. (+34) 913 001 435
 Fax. (+34) 913 001 645

Document Ref: D1126-01
Publication Date: 07/09/2020

Certified company



PYMEINNOVADORA

