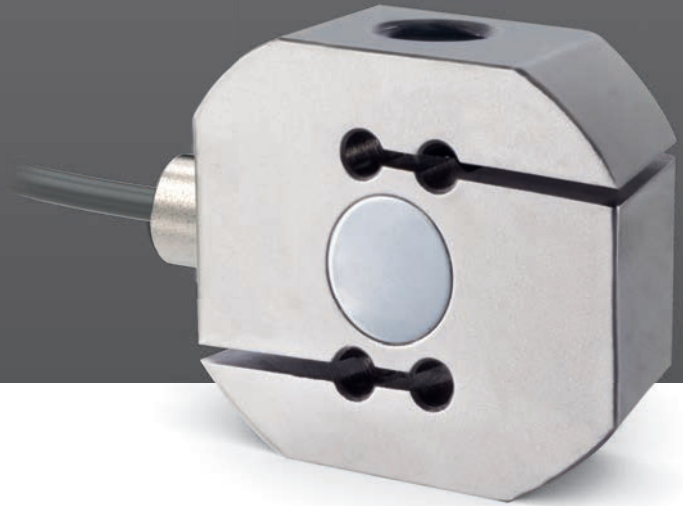


Load cells designed for industrial applications



CTC Traction and compression sensor

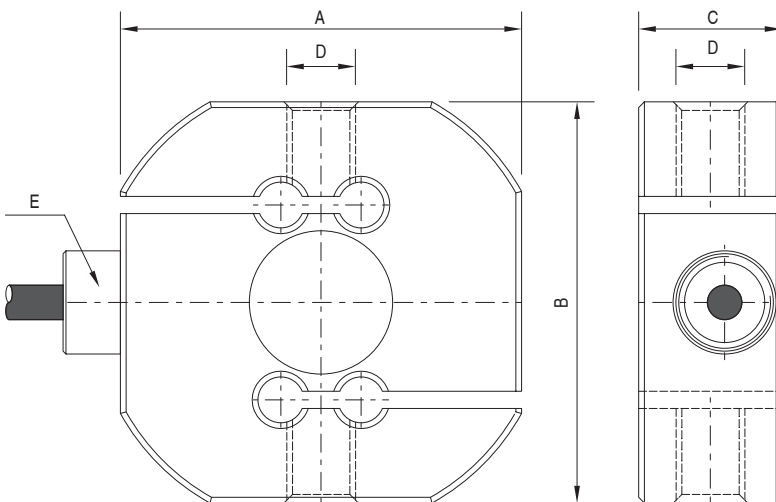
The CTC is a universal model cell. Its specific characteristics make this cell an optimal solution for industrial environments with IP67 protection against contact, dust or water penetration.

These cells can handle both traction and compression, making it easier to adapt to every weighing need. Examples of CTC applications include weighing in concrete manufacturing plants, hooks, presses...

Specifications

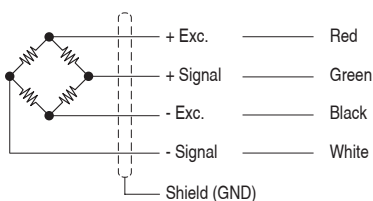
Parameter	Units	Specifications	
Model	-	CTC	
Nominal Load (N.L.)	kg	15 ... 75	75 ... 5000
Nominal Sensibility (N.S.)	mV/V	2.0 ± 0.1%	
Zero balance	%N.S.	1.5	
Maximum excitation voltage	V	12	
Hysteresis error	%N.S.	0.023	
Crepp, over 30 minutes	%N.S.	0.019	
Maximum linearity error	%N.S.	0.021	
Temperature range	Compensated	°C (°F)	-10 ... +40 (+14 ... +104)
	Operating		-20 ... +60 (-4 ... +140)
	Storage		-20 ... +70 (-4 ... +158)
Temperature effect on sensibility	%N.S.	0.022	
Temperature effect on zero	% / 5°C	0.018	
Min. Insulation resistance (V.Test s 100V)	GΩ	4	
Input resistance	Ω	380 ± 10	
Output resistance	Ω	350 ± 1,5	
Load limit	Without characteristics loss	150	
	Breaking	200	
Cable	Type	4 x 0.22 mm ² Ø6	
	Standard length	4	
	Material	Polyurethane (PU)	
Sensor	Material	Aluminum	Alloy steel
	Surface treatment	Anodized	Chemical nickel
Protection class	-	IP67	
Working on	-	Traction / Compression	

Dimensional Drawings (mm)



C.N. (kg)	15 ... 75	100 ... 500	750 ... 2500	3000 ... 5000
A	60	70	80	94
B	60	70	80	89
C	20	25	25	42
D	M-10	M-12	M-16	M-22 x 2.5
E	-	PG-9	PG-9	PG-9

Working diagram



Product Reference



Ref.	Nominal Load (kg)	Model
001433	15	CTC
002550	25	
001315	50	
020515	75	
000415	100	
000413	150	
000511	200	
001642	250	
001173	300	
000247	500	
001176	750	
001043	1000	
000988	1500	
001044	2000	
000955	2500	
000507	3000	
000387	5000	

For more information

www.dinacell.com

Dinacell Electrónica S.L.
 Pol. Ind. Santa Ana C/ El Torno N°8
 CP 28522 Rivas Vaciamadrid, Madrid, ESPAÑA
 Tel. (+34) 913 001 435
 Fax. (+34) 913 001 645

Document Ref: D1150-01
Publication Date: 01/12/2021

Certified company



PYMEINNOVADORA

