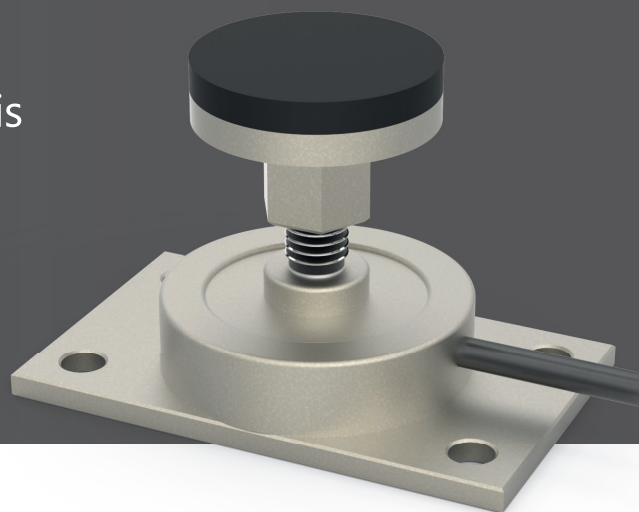


## BPPLR

Load cell specially designed for the installation under cabin chassis



More information

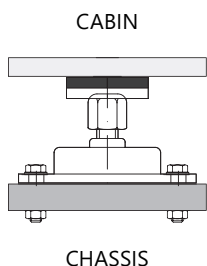
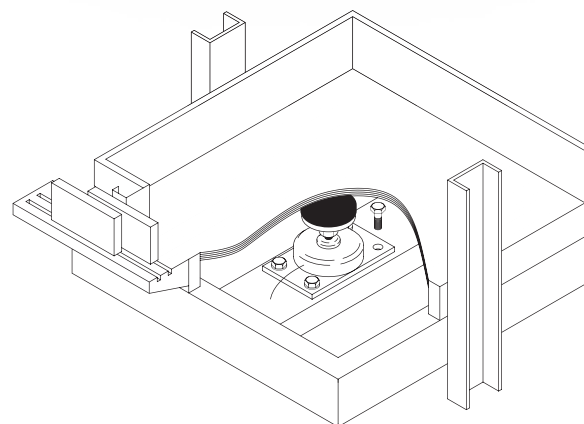


### BPPLR Compression load cell

The BPPLR is a sensor solution to be installed under the lift cabin. The sensors are installed on the center of the lift chassis and receive the weight pressure of the cabin floor.

The BPPLR design embodies a base to be anchor to the chassis and on the head of the sensor, it is equipped with a silent-block to avoid possible cabin vibrations.

This type of compression sensors provides great reliability and enormous mechanical robustness supporting loads of up to three tons.



### For a complete installation

These types of sensors are placed in the elevator chassis and have an USB or 5 cable output termination. For installations that requires more than one sensor, it is possible to connect the sensors to a (1) INTERFACE that also offers the possibility of USB output or 5 wires termination (depending on the type of the unit controllers input).



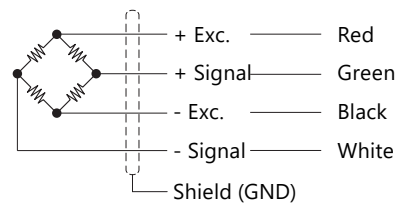
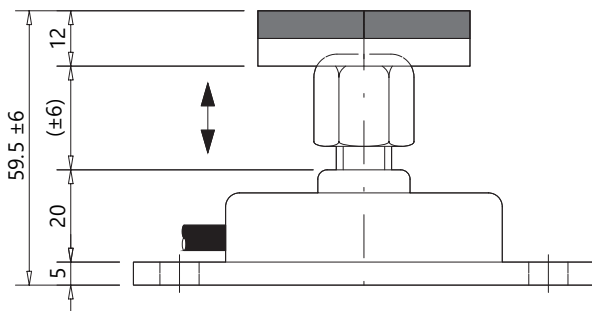
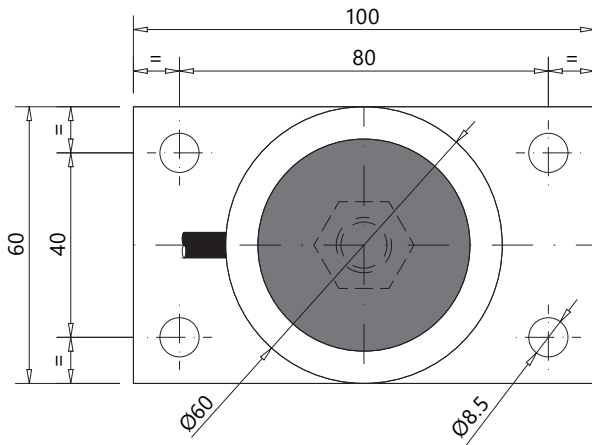
(1) INTERFACE



## Specifications

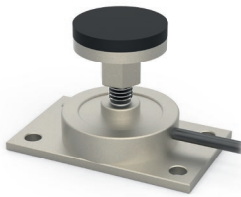
Parameter	Units	Specifications		
Model	-	BPPLR		
Nominal Load (N.L.)	t	1.2	2	3
Nominal Sensibility (N.S.)	mV/V	1.4 ... 2.0		
Accuracy	-	0.4%		
Zero balance	mV/V	±0.2		
Maximum excitation voltage	V	12		
Temperature range	Compensated	-10 ... +40 (+14 ... +104)		
	Operating	°C (°F)	-20 ... +60 (-4 ... +140)	
	Storage		-20 ... +70 (-4 ... +158)	
Min. Insulation resistance (V.Test = 100V)	GΩ	4		
Input resistance	Ω	350±3		
Output resistance	Ω	350±2		
Load limit	Safe	%N.L.	150	
	Type	-	4 x 0.22mm <sup>2</sup> Ø6	
Cable	Termination	-	Wiring connection / USB	
	Standard length	m	4	
	Material	-	Polyurethane (PU)	
	Material	-	Alloy steel	
Sensor	Surface treatment	-	Chemical nikel	
	Protection class	-	IP66	

## Dimensional drawings (mm) and wiring diagram



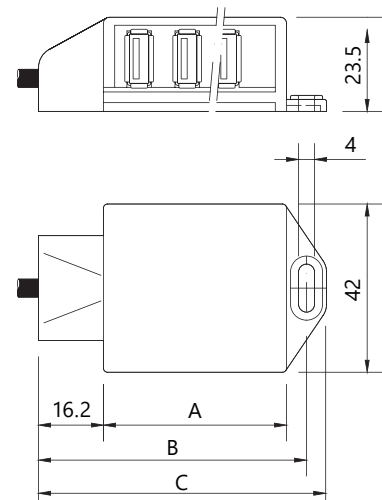


## Product Reference



Ref.	Cable termination	N.L. (t)	Model
001019	Wiring connection	1.2	BPPLR
011265	USB		
022585	Wiring connection	2	
013808	USB		
003758	Wiring connection	3	
013807	USB		

## Accessory: INTERFACE



Parameter	Units	Specifications			
Model	-	INTERFACE			
Temperature range	°C (°F)	-20 ... +60 (-4 ... +140)			
Casing material	-	Fireproof V0			
Protection class	-	IP50			
Cable type	-	4 x 0.22mm <sup>2</sup> Ø4			
Standard length	m	5 + Ferrita			
USB Input	-	6	12		
Cable Output	-	USB	Wiring connection	USB	Wiring connection
Ref.	-	007555	007274	007554	007275

USB	Dimensions in mm		
	A	B	C
6	48	69	74
12	84	105	110

For more information

**www.dinacell.com**

Dinacell Electrónica S.L.  
 Pol. Ind. Santa Ana, C/ de la Fundación 8  
 CP 28522 Rivas Vaciamadrid, Madrid, ESPAÑA  
 Tel. (+34) 913 001 435

**Document Ref:** D1028-06

Certified company



Management System  
 ISO 9001:2015  
 ISO 14001:2015



www.tuv.com  
 ID 9105036889



PYME INNOVADORA



**Publication Date:**

24/04/2026

VMFT06.04

Dinacell Electrónica S.L. reserves the right to add, modify and/or delete content of the document without prior notice. The content indicated here should be used as general product information. It should not be interpreted as a guarantee of quality or durability.