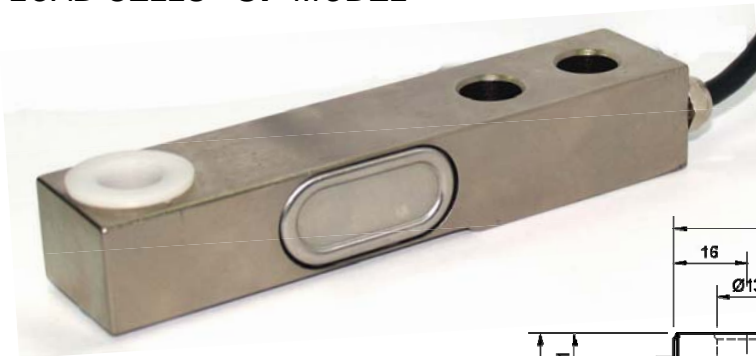
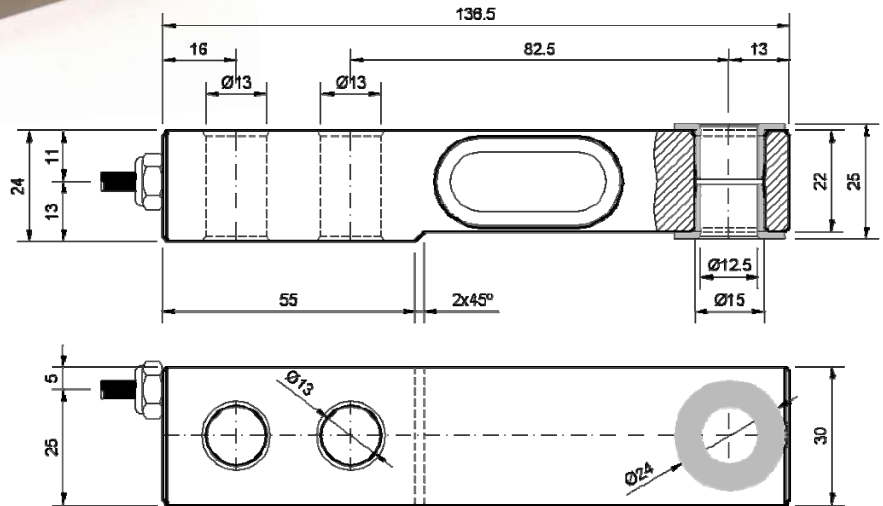


## LOAD CELLS CF MODEL

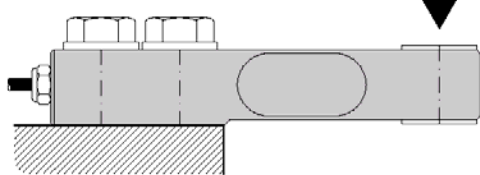


15 - 1500 Kg

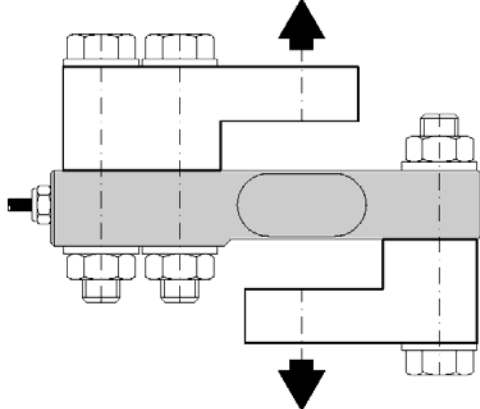


Dimensions in mm

### MOUNTING IN JUT



### CF ACCESORY FOR TRACTION (OPTIONAL)



- Load cells specially designed to work in jutting out, with sensor element due to flexion or cut, according to capacities.
- Equipped with insulating cases of high mechanical resistance..
- Construction in alloy steel or stainless steel.
- Anticorrosion treatment of chemical nickel (alloy steel).

### 4 WIRES CONNECTION

Excitation +	Red
Excitation -	Black
Signal +	Green
Signal -	White

### TECHNICAL CHARACTERISTICS

Sensibility	2 mV/V
Tolerance adjust sensibility	1%
Tolerance adjust on zero	1% F.E.
Tension of excitation	5 -10 V (max. 15V)
No Linearity	<0.023% F.E.
No Repeatability	<0.023% F.E.
Combined error	<0.05% F.E.
Hysteresis	<0.05% F.E.
Creep in 30 minutes	<0.025% F.E.
Temp. Effect on sensibility	<0.023%
Temp. Effect on zero	<0.016% / 5°C
Compensated margin of temperature	-10°C / +40°C
Input resistance	350 Ω ± 10Ω
Output resistance	350 Ω ± 1.5 Ω
Insulation resistance (V.Test=100V)	>5000 10 <sup>6</sup> Ω
Maximum work load	150% F.E.
Load limit without lost of characteristics	200% F.E.
Break load	>300% F.E.
Maximum deformation	<0.5 mm F.E.
Cable	Flexible 4x0.25 mm
Protection	IP 66