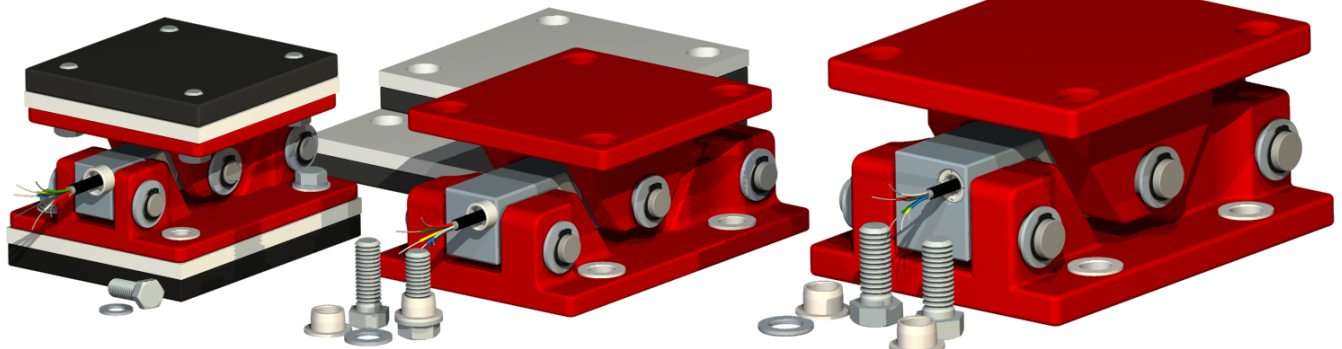


## SK\_ 1 ... 60 t



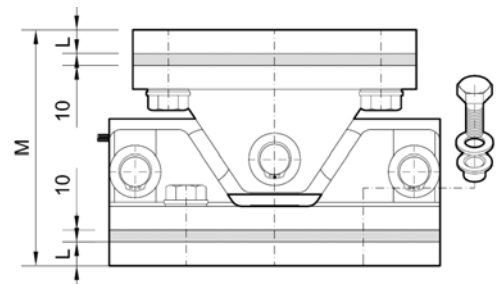
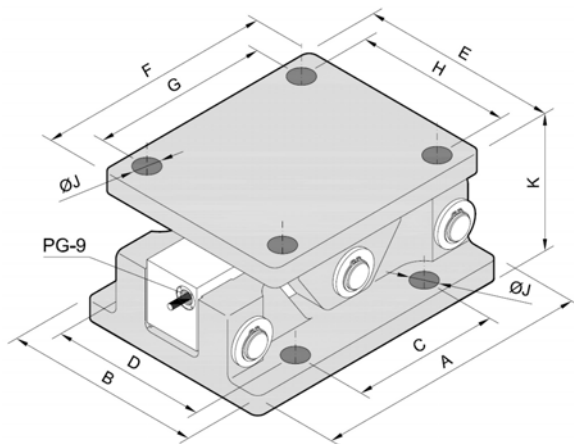
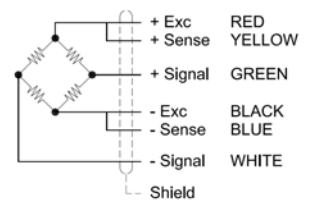
**SKP**  
1 ... 6 tN

**SKM**  
8 ... 15 tN

**SKG**  
20 ... 60 tN

- Load cell specially designed for weighing silos, with anti-overturn support.
- Manufactured with double shear element. Made of stainless steel or alloy steel with chemical nickel protection.
- Support incorporates a low profile, treated with highly corrosion resistant paint.

### 6 WIRES CONNECTIONS



Model	Nominal load (nL) t.	Dimensions in (mm.)											
		A	B	C	D	E	F	G	H	J	K	L	M
<b>SKP</b>	<b>1, 2, 3, 4, 5, 6</b>	180	140	130	100	140	140	100	100	18	75	15	125
<b>SKM</b>	<b>8, 10, 15</b>	240	160	130	120	160	170	130	120	21.5	100	15	150
<b>SKG</b>	<b>20, 25, 30, 40, 50, 60</b>	280	200	150	158	200	240	180	158	25	138	20	198

## Technical characteristics

Sensibility	2 mV/V	Compensated temperature range	-10..40 °C
Tolerance sensitivity adjustment	± 0.1 % F.S.	Input resistance	760 ± 20 Ω
Tolerance adjust on zero	± 1.5 % F.S.	Output resistance	700 ± 4 Ω
Maximum excitation voltage	24 V	Minimum insulation resistance (V.Test = 100V)	4 GΩ
Non linearity	± 0.02 % F.S.	Maximum working load	150 % F.S.
Non repeability	± 0.012 % F. S.	Load limit without loss of characteristics	180 % F.S.
Combined error	± 0.029 % F. E.	Breaking load	300 % F.S.
Histeresys	± 0.033 % F. S.	Cable type (Shielded)	6 x 0.25 mm <sup>2</sup> / 8 m.
Creep in 30 minutes	± 0.025 % F. S.	Protection class	IP67
Temperature effect on sensitivity	± 0.023 % F. S.	Material (load cell)	Alloy steel
Temperature effect on zero	± 0.018 % / 5 °C	Surface treatment	Chemical nikel