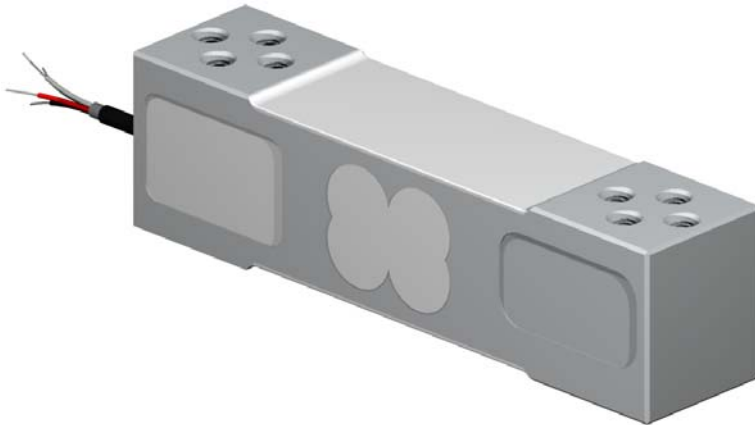
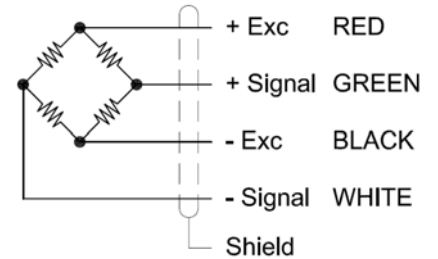


MP 150 kg.

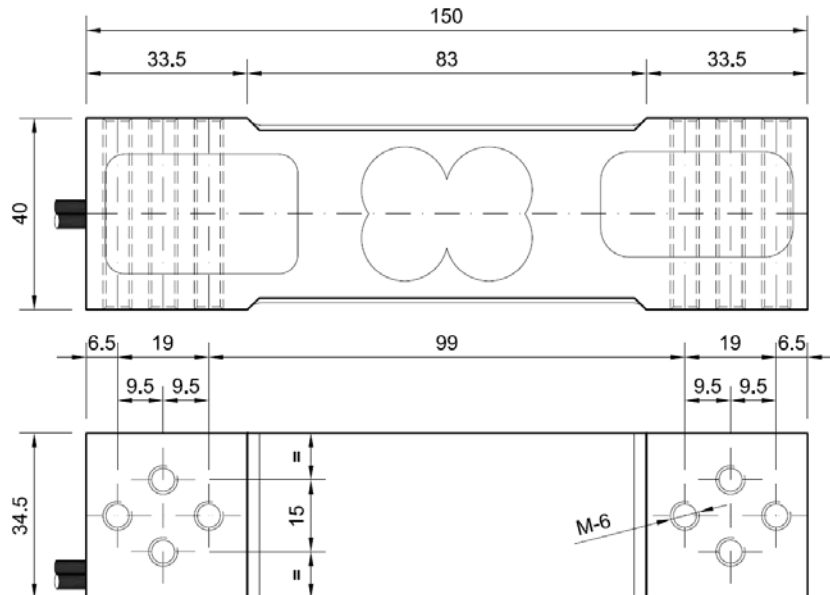


Wiring diagram



- Load cells specially designed to work in jutting out, with flexion sensor element.

Dimensions in mm



Technical characteristics

Nominal load (nL)	150 kg	Input resistance	380Ω ± 30 Ω
Sensibility	2.0 mV/V ± 10%	Output resistance	350Ω ± 2 Ω
Zero tolerance adjust	2% F.S.	Insulation resistance (V. Test = 100V)	>4 GΩ
Non linearity	0.021 % F.S.	Maximum working load	150 % F.S.
Histeresys	0.023 % F.S.	Load limit without loss of characteristics	200 % F.S
Non repeability	0.012 % F.S.	Protection class	IP 44
Creep in 30 minutes	0.019 % F.S.	Maximum excitation voltage	12V.
Temperature effect on sensitivity	0.026 % F.S.	Cable type	Flexible, Ø6 4x0.22 mm ²
Temperature effect on zero	0.015 % F.S.	Cable length	5 m.
Compensated temperature range	-10..40 °C	Material	Aluminum