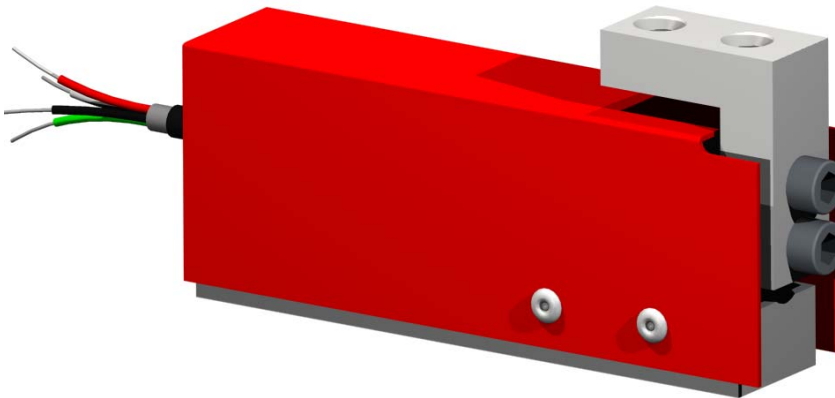
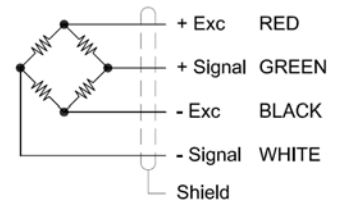


MP 1 .. 20 kg.

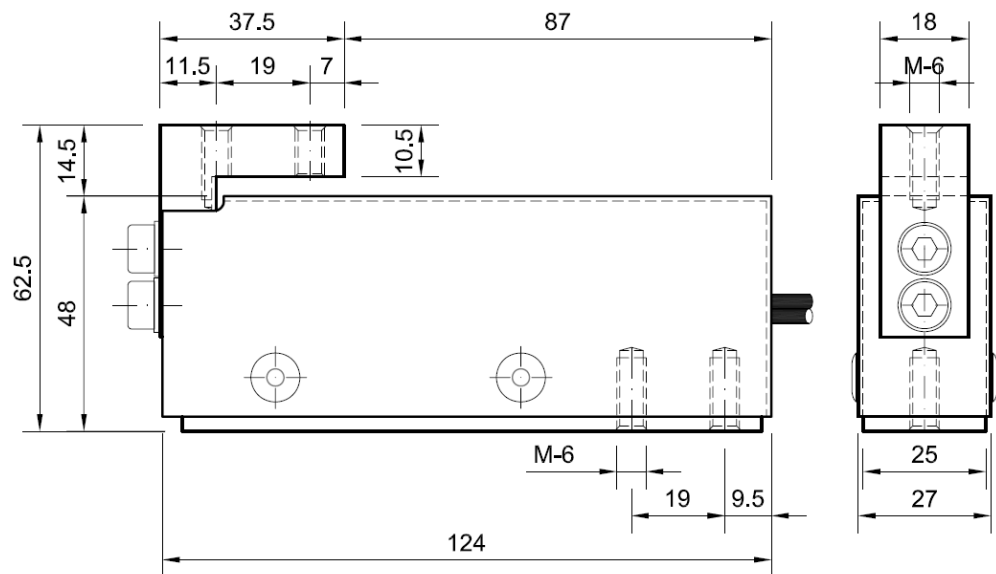


Wiring diagram



- Load cell specially designed to work in jutting out, with flexion element.
- It is manufactured in aluminum with a baking painting metal housing.

Dimensions in mm



Technical characteristics

Nominal load (nL)	1, 2, 3, 4, 5, 6, 10, 15, 20 kg	Input resistance	380Ω ± 30 Ω
Sensibility	2.0 mV/V ± 10%	Output resistance	350Ω ± 2 Ω
Zero tolerance adjust	2% F.S.	Insulation resistance (V. Test = 100V)	>4 GΩ
Non linearity	0.021 % F.S.	Maximum working load	150 % F.S.
Histeresys	0.023 % F.S.	Load limit without loss of characteristics	200 % F.S
Non repeability	0.012 % F.S.	Protection class	IP 44
Creep (over 30 minutes)	0.019 % F.S.	Máxima tensión de excitación	12V.
Temperature effect on sensitivity	0.026 % F.S.	Cable type	Flexible, Ø6 4x0.22 mm ²
Temperature effect on zero	0.015 % F.S.	Cable length	5 m.
Compensated temperature range	-10..40 °C	Material	Aluminum