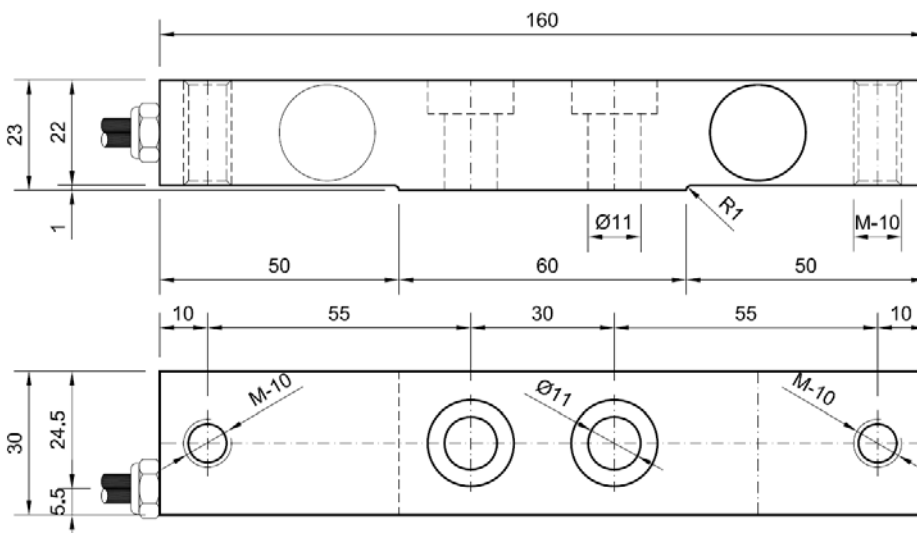


- Load cell specially designed for compression works
- Very used in the automotive industry



Measurig unit in mm.

Connections	
Red	+12V
Black	Gnd
Green	Output signal
White	N.C

Technical characteristics

Cell nominal load (nL)	1000 kg.	Minimum insulation resistance (V.Test = 100V)	4 GΩ
Maximum input impedance	500 Ω	Maximum working load	150 % F.S.
Output range	1-9 mA	Break load	>300 % F.S.
Tension of excitation	11...15 V	Protection class	IP65
Tolerance adjust on zero	0.1 mA	Cable type	4x0,22 mm ²
Accuracy	0.2 %	Material	Alloy steel
Service temperature range	-20..60 °C	Surface treatment	Chemical nikel
Maximun power consumption	50 mA		

Remarks: The maximun readable working load depends on the output impedance