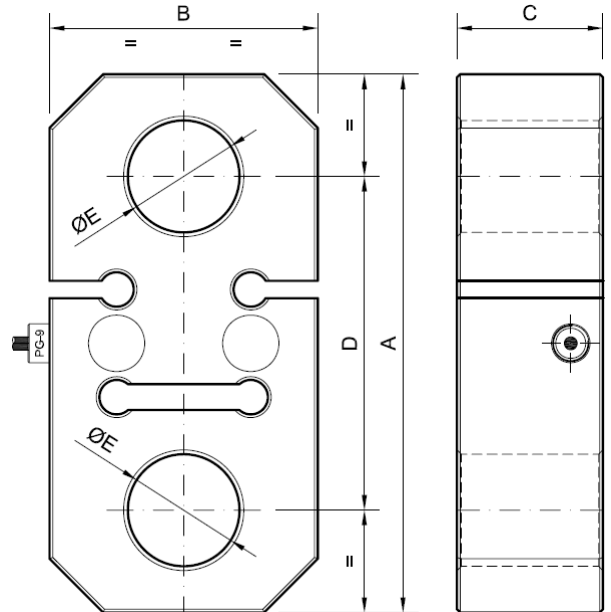
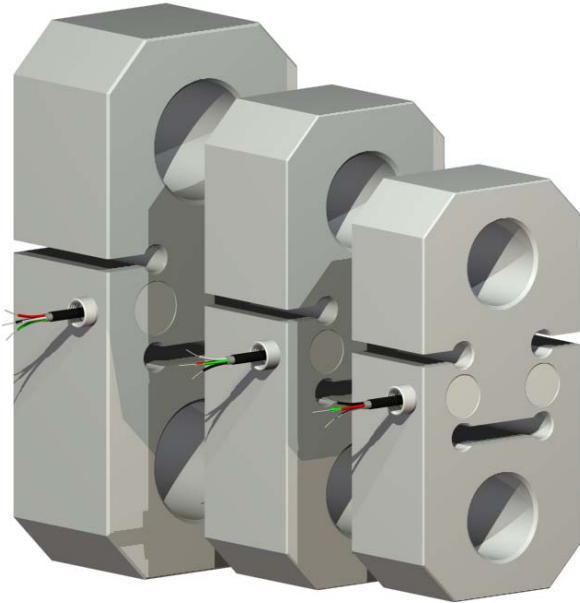
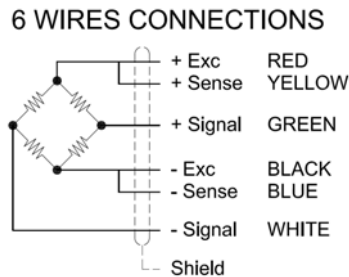


CTDC 10..50 t



Dimensions in mm.

- Load cells specially designed to work in traction, with shear sensor elements
- Double shear load cell for higher resistance to the break
- Used with shackles



nL (t)	A	B	C	D	ØE
10	220	110	48	130	45
12					
15	250	125	68	155	52
20					
25	290	125	78	175	58
35					
50	330	150	90	195	72

Technical characteristics

Nominal load (nL)	10, 12, 15, 20, 25, 35, 50 t	Minimum Isolation resistance (V.Test = 100V)	4 GΩ
Sensibility	2.0 mV/V ± 0.1%	Input resistance	760 ± 20 Ω
Zero balance	1.5 % F.S.	Output resistance	700 ± 2 Ω
Non linearity	0.022 % F.S.	Maximum working load	150 % F.S.
Histeresys	0.027 % F.S.	Safe load limit	180 % F.S.
Creep (30 minutes)	0.02 % F.S.	Breaking load	400 % F.S.
Temperature effect on sensitivity	± 0.023 % F.S.	Protection class	IP67
Temperature effect on zero balance	± 0.019 % F.S.	Cable type	Flexible Ø6 - 6 x 0.25mm ²
Temperature range compensation	-10 .. 40 °C	Cable length	8 m.
Temperature range service	-20 .. 60 °C	Material	Alloy steal
Maximum excitation voltage	12 V	Surface treatment	Chemical nikel