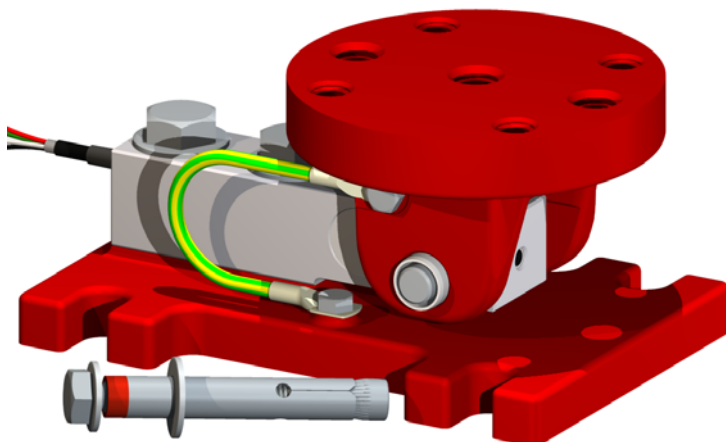
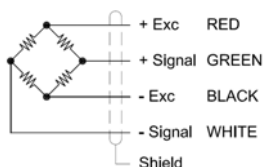


CFRT 1..6t

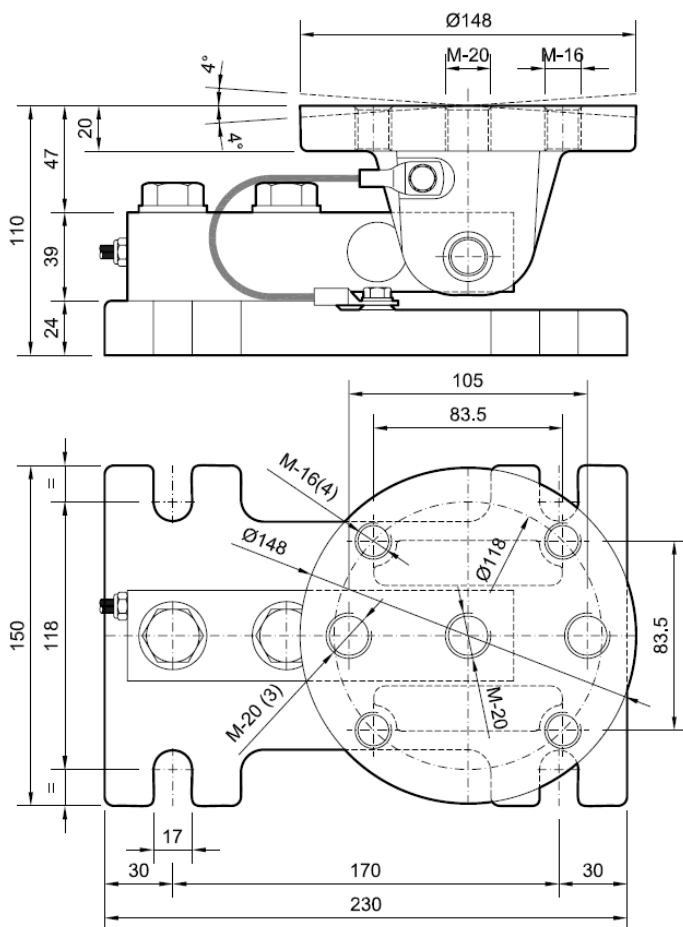


- Load cell with anti-overflow support specially designed for weighing in silos.
- Casting support treated with corrosion-resistant paint.
- Available with capacities from 1000 kg to 6000kg.
- Electrical insulation between load cell and support.
- The top bracket allows to receive any type of support, either a round or rolled leg in any format.
- Available accessories:
 - Concrete sleeve anchors.
 - Screws, nuts and washers.

Wiring diagram



Dimensions in mm



Technical characteristics

Nominal load (nL)	1, 2, 3, 4, 5, 6 t
Sensibility	2 mV/V ± 0.1%
Tolerance adjust on zero	2% F.S.
Maximum excitation voltage	12V
Histeresys error	0,033 % F.S.
Non linearity	0,02 % F.S.
Compensated temperature range	-10..40 °C
Service temperature range	-20..60 °C
Storage temperature range	-20..70 °C
Temperature effect on sensitivity	0.022 % F.S.
Temperature effect on zero	0.018 % / 5°C
Insulation resistance (Test voltage = 100V)	4 GΩ
Input resistance	380 ±10 Ω
Output resistance	350 ±1.5 Ω
Creep (over 30 minutes)	0,03 % F.S.
Maximum working load	150 % F.S.
Load limit without loss of characteristics	200 % F.S.
Cable type	Shielded, Ø6 4x0.22 mm ²
Cable length	6 m
Protection class	IP 67
Material	Alloy steel
Surface treatment	Chemical nickel