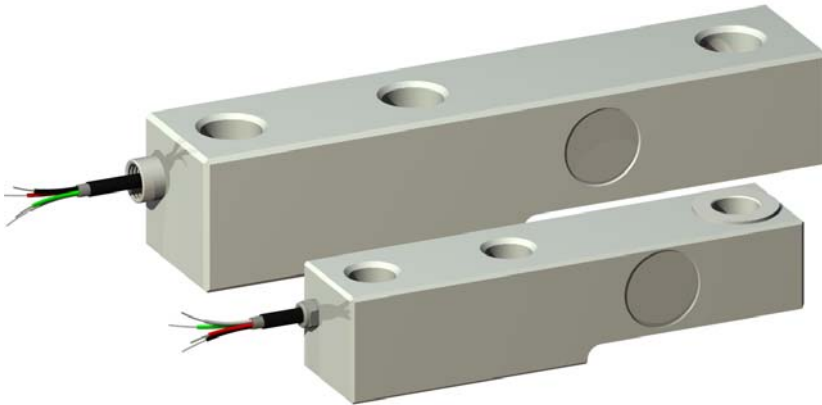
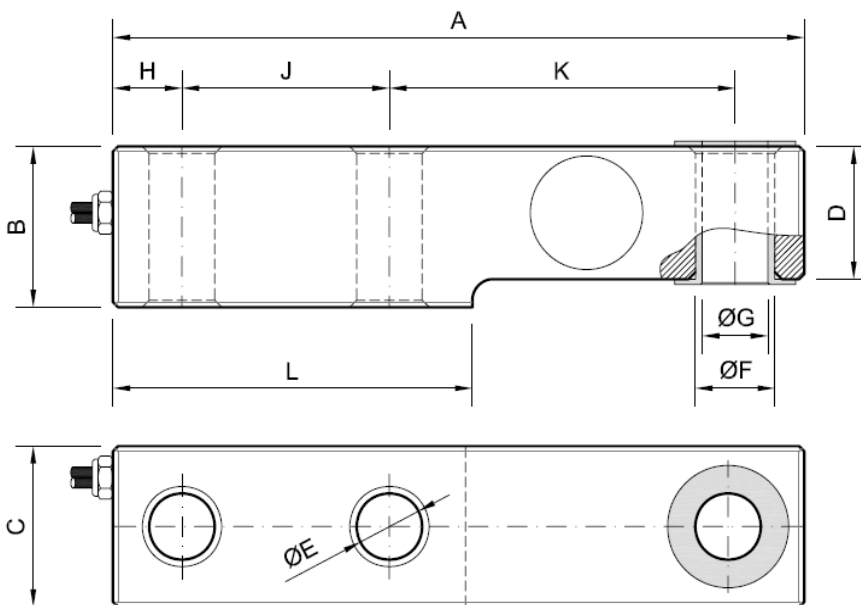


## CFA 1 .. 20 t



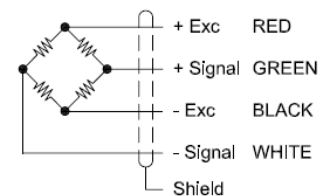
- Load cells specially designed to work in jutting out, with flexion or shear element
- Equipped with insulating cases of high mechanical resistance

nL (t)	1, 2, 3, 5	7.5, 10	15, 20
<b>A</b>	200	275	280
<b>B</b>	46	58	65
<b>C</b>	46	58	65
<b>D</b>	38	48	55
<b>ØE</b>	19	25	29
<b>ØF</b>	23	25	29
<b>ØG</b>	19	-	-
<b>H</b>	20	25	30
<b>J</b>	60	80	80
<b>K</b>	100	140	140
<b>L</b>	104	140	140



Dimensions in mm

Wiring diagram



### Technical characteristics

Nominal load (nL)	1, 2, 3, 5, 7.5, 10, 15, 20 t	Maximum excitation voltage	12V
Sensibility	2 mV/V ± 0.1%	Insulation resistance (V. Test = 100V)	4 GΩ
Tolerance adjust on zero	1.5 % F.S.	Input impedance	380 Ω ±10 Ω
Non linearity	0,019 % F.S.	Output impedance	350 Ω ±1.5 Ω
Hysteresys error	0,020 % F.S.	Load limit without loss of characteristics	150 % F.S.
Creep in 30 minutes	0,017 % F.S.	Minimum breaking load	300 % F.S.
Temperature effect on sensitivity	0.023 % F.S.	Cable type	Flexible, Ø6 4x0.22 mm <sup>2</sup>
Temperature effect on zero	0.013 % / 5°C	Cable length	4 m
Compensated temperature range	-10..40 °C	Protection class	IP 67
Service temperature range	-20..60 °C	Material	Alloy steel
Storage temperature range	-20..70 °C	Surface treatment	Chemical nikel