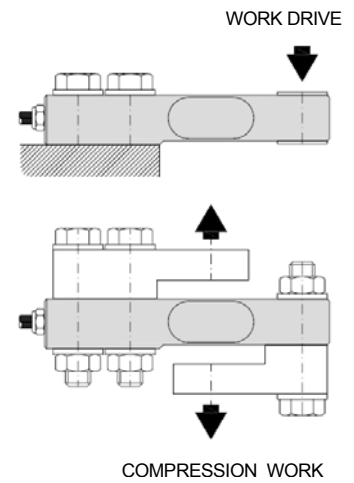
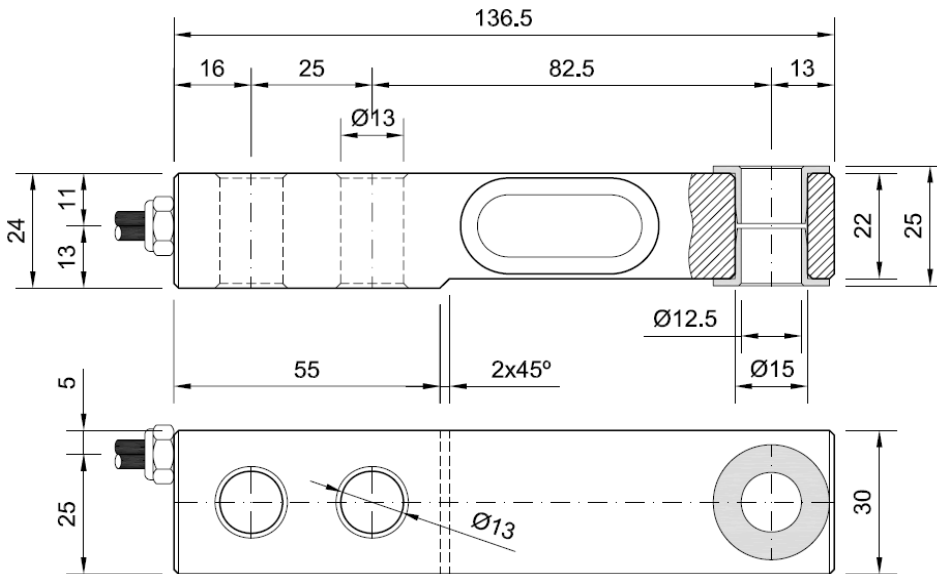


CF 15...1500 kg.

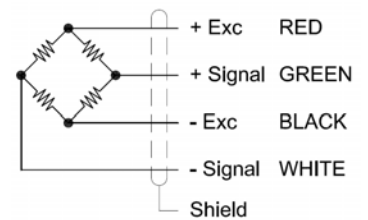


Load cells specially designed to work in jutting out with shear or flexion sensor element. Equipped with insulating cases of high mechanical resistance.



Dimensions in mm

Wiring diagram



Technical characteristics

Nominal load (nL) kg.	15, 30, 50, 75, 100, 150, 200, 250, 300, 500, 750, 1000, 1500	Minimum isolation resistance (V. Test = 100V)	4 GΩ
Sensibility	2.0 (mV/V) ± 0.1 %	Input resistance	380Ω ± 10 Ω
Tolerance adjust on zero	2% F.S.	Output resistance	350Ω ± 1.5 Ω
Maximum excitation voltage	12V.	Creep (over 30 minutes)	0.03 % F.S.
Histeresys error	0.033 % F.S.	Safe load limit	150 % F.S.
Maximum linearity error	0.02 % F.S.	Breaking load	250% F.S
Temperature range compensation	-10 ... 40 °C	Protection class	IP 67
Temperature range service	-20 ... 60 °C	Cable type	Flexible, Ø6 4x0.22 mm ²
Storage temperature range	-20 ... 70 °C	Cable length	4 m.
Temperature effect on sensitivity	0.022 % F.S.	Material	Aluminum < 50 kg. Alloy steel ≥ 50 kg.
Temperature effect on on zero	0.018 % / 5°C	Surface treatment	Chemical nickel (Alloy steel)