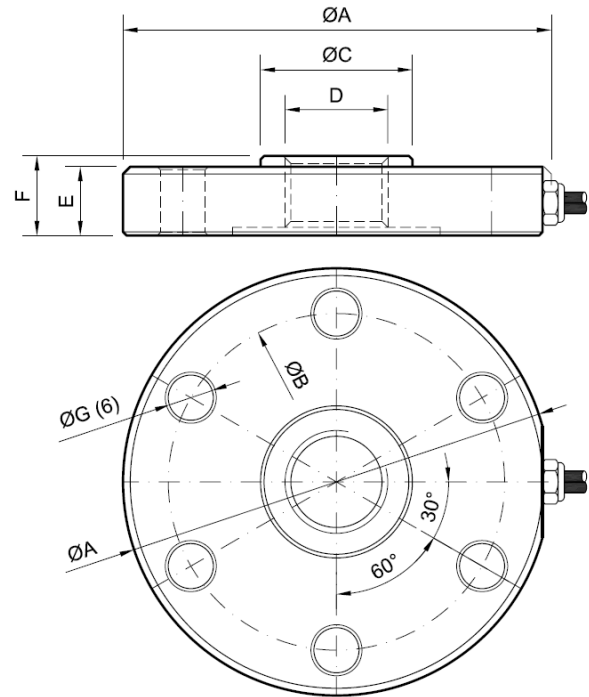
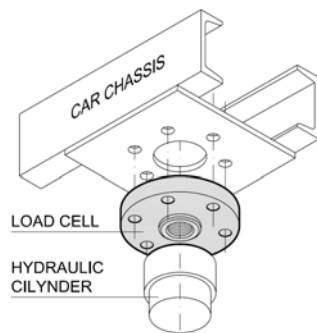


BPH-PM 3 - 6 t. BPH-GD 3 - 6 t.

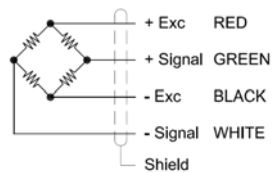


Dimensions in mm

- Load cells specially designed to work in traction and compression.
- The application is on the field of hydraulic elevators. The sensor is mounted between the piston rod and the cabin chassis.



Wiring diagram



Mod.	PM-24		PM-30		GD25	
	3	6	3	6	3	6
ØA	118				145	
ØB	93				12.5	
ØC	36		42		36	
D	M-24		M-30		Ø25	
E	19				25	
F	22				30	
ØG	12.5				15	

Technical characteristics

Nominal load (nL)	3 - 6 t.	Creep (over 30 minutes)	0,06% F.S.
Sensibility	1,4..2,0 mV/V	Maximum excitation voltage	12 V
Tolerance adjust on zero	5 % F.S.	Minimum insulation resistance (V.Test = 100V)	4 GΩ
Temperature effect on sensitivity	0,044% F.S.	Maximum working load	150 % F.S.
Temperature effect on zero	0,035% F.S.	Breaking load	>300 % F.S.
Compensated temperature range	-10..40 °C	Protection class	IP67
Service temperature range	-20..60 °C	Cable type	Ø6 4x0,22 mm ²
Input resistance	350 ± 3Ω	Cable length	4 m
Output resistance	350 ± 2Ω	Material	Alloy steel
Histeresys error	0,067 % F.S.	Surface treatment	Chemical nikel
Non linearity	0,04% F.S.		